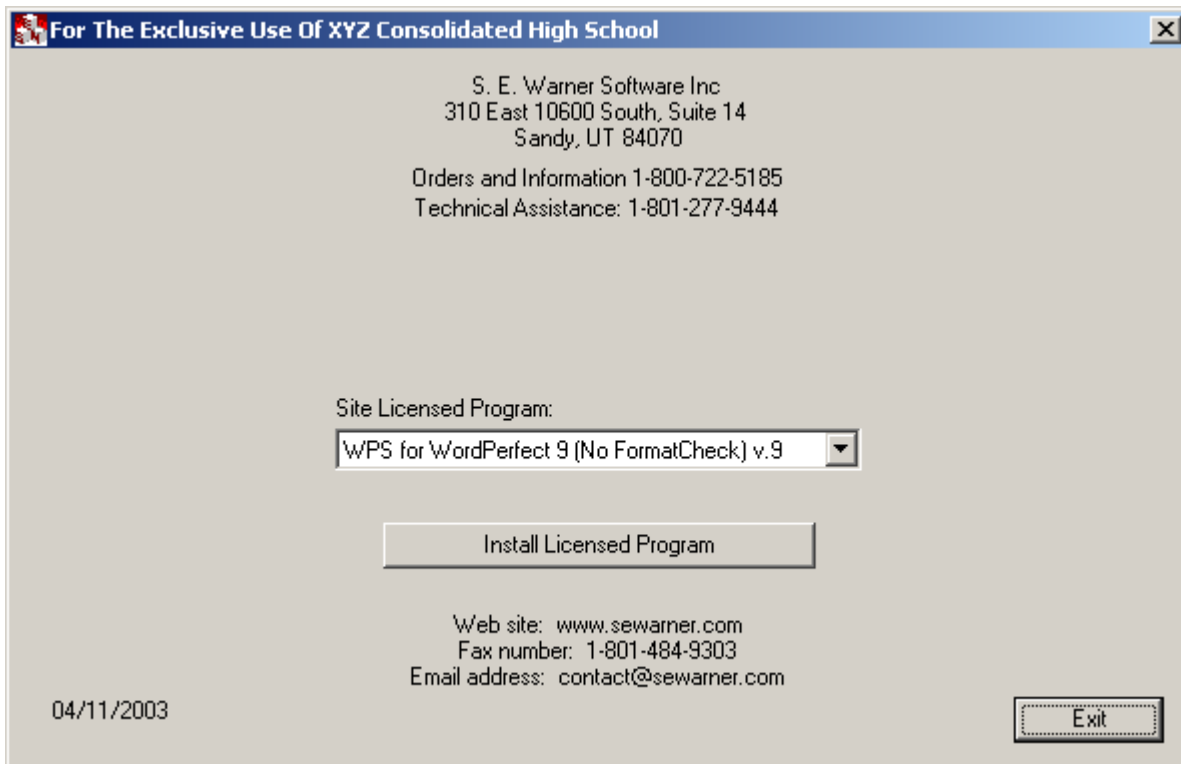


Step 1 -- Installation of WPS for WordPerfect 9

To begin the installation, place the AUTO-RUN INSTALLATION CD in the CD drive.
or Open the Auto-Run Installation CD and double click on "setup.exe"
or Click on Start->Run->(CD drive):\setup.exe and then click on "OK"
or Open the folder which contains the WPS for WordPerfect 9 installation items and then double
on the "setup.exe" file.

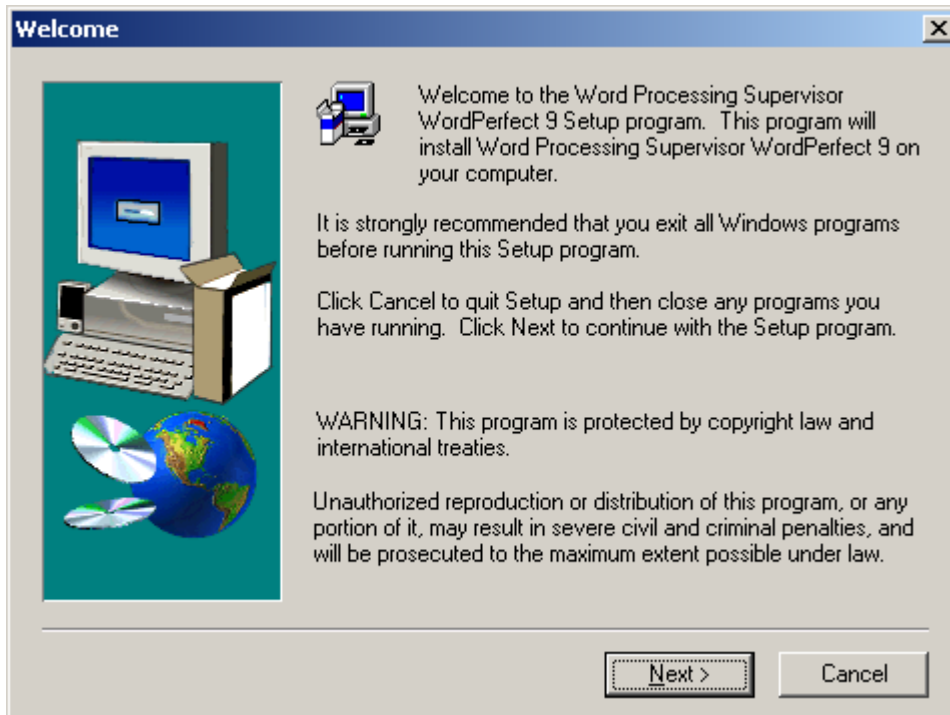


If the **Install** button above indicates this is an installation of a "**DEMO/PREVIEW**", this button should be named "**Install Demo/Preview Program**". However, if this is an installation of a **site licensed program**, this button should be named "**Install Licensed Program**".

Once the label of this button is correct, click on this button to begin the actual installation of WPS for WordPerfect 9.

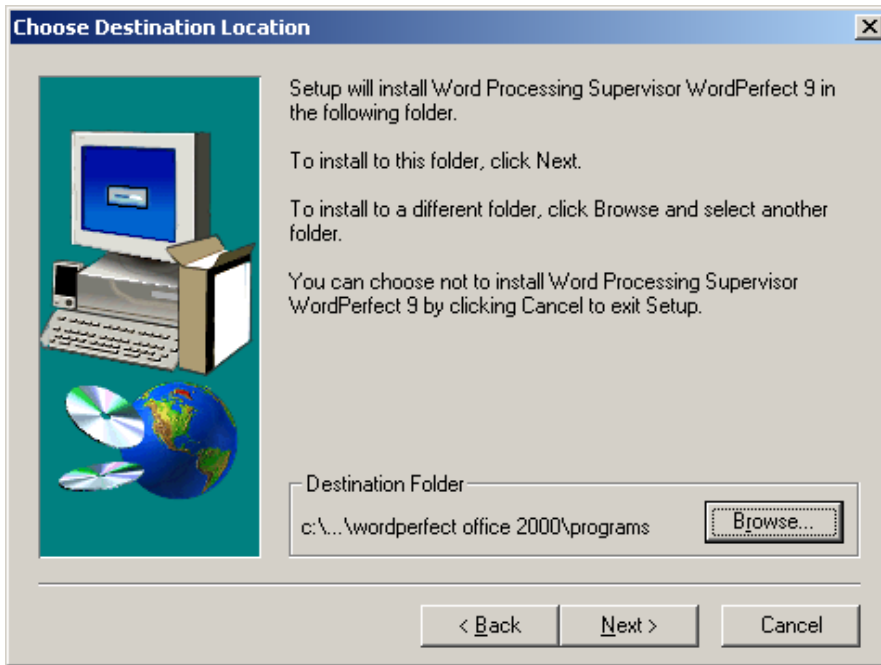
*To change the button from "**Install Demo/Preview Program**" to "**Install Licensed Program**", the site license files (**LICENSE** and **WPSWP9S**) must be in the "**SEWlicenses**" folder.

Step 2 -- Installation of WPS for WordPerfect 9



Click on "**Next**" to Continue or "**Cancel**" to stop the installation.

Step 3 -- Installation of WPS for WordPerfect 9

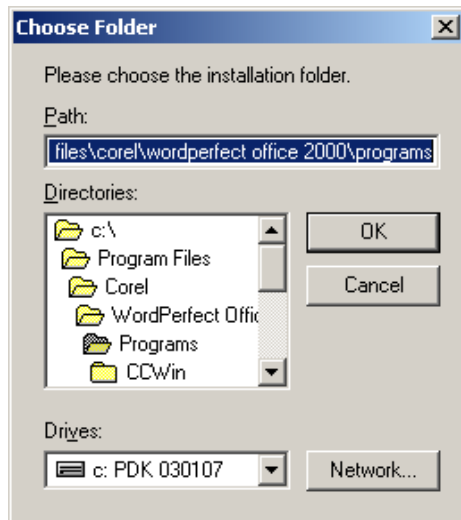


ATTENTION: WPS for WordPerfect 9 must be installed in the same folder where WordPerfect 9 is installed; the standard installation path would normally be: **"C:\Program Files\Core\WordPerfect Office 2000\Programs"**

TO DO:

Check the path shown in the **"Destination Folder"** box. If this path is correct, click on the **"Next"** button.

If the path is **NOT** correct, click on the **"Browse"** button and either navigate to the correct path or enter the correct path in the **"Path:"** box.



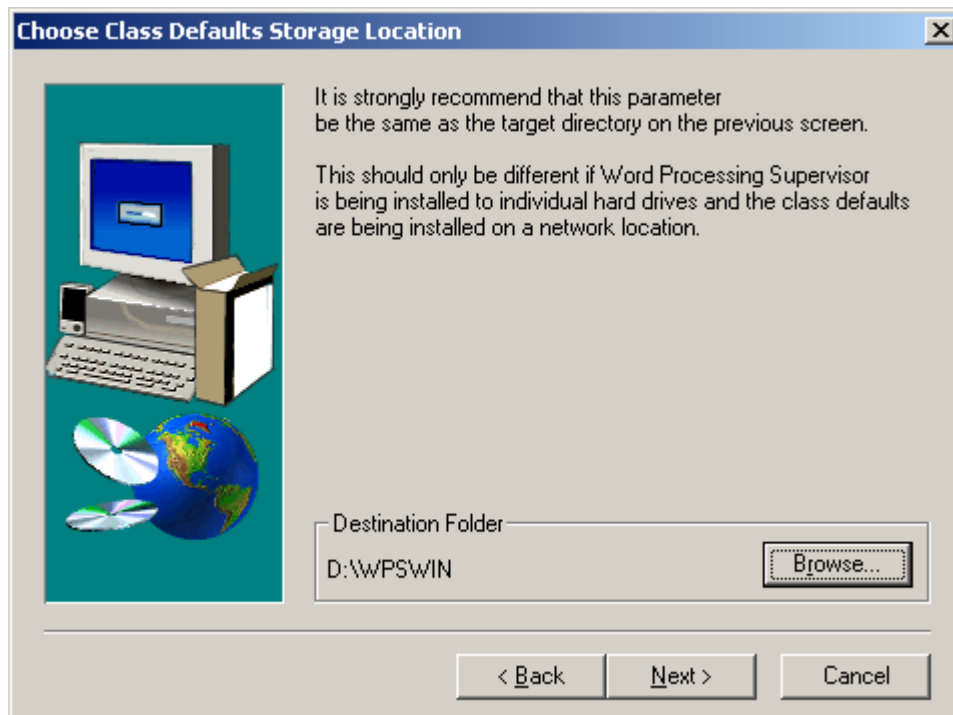
When the path in the **"Path:"** box is correct, click the **"OK"*** button and then click the **"Next"** button.

*If any part of the path does not exist, you will be prompted to create the non-existent elements in the path. Click **"Yes"**.

Step 4 -- Installation of WPS for WordPerfect 9

NOTE:

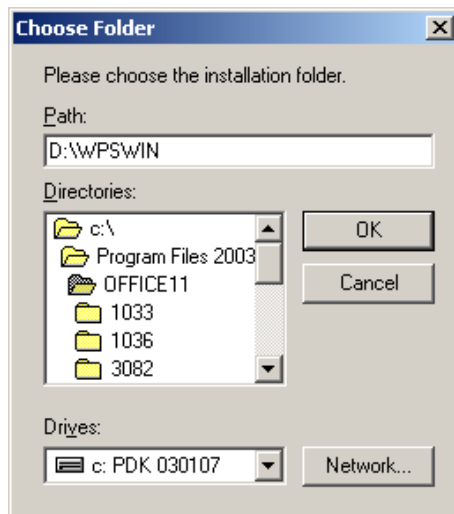
Highly recommend that--class rolls, student records, and error-checking keys-- ALL be in this same folder. Subfolders for Records and Keys will be created later.



TO DO:

Check the path shown in the "**Destination Folder**" box. If this path is correct, click on the "**Next**" button.

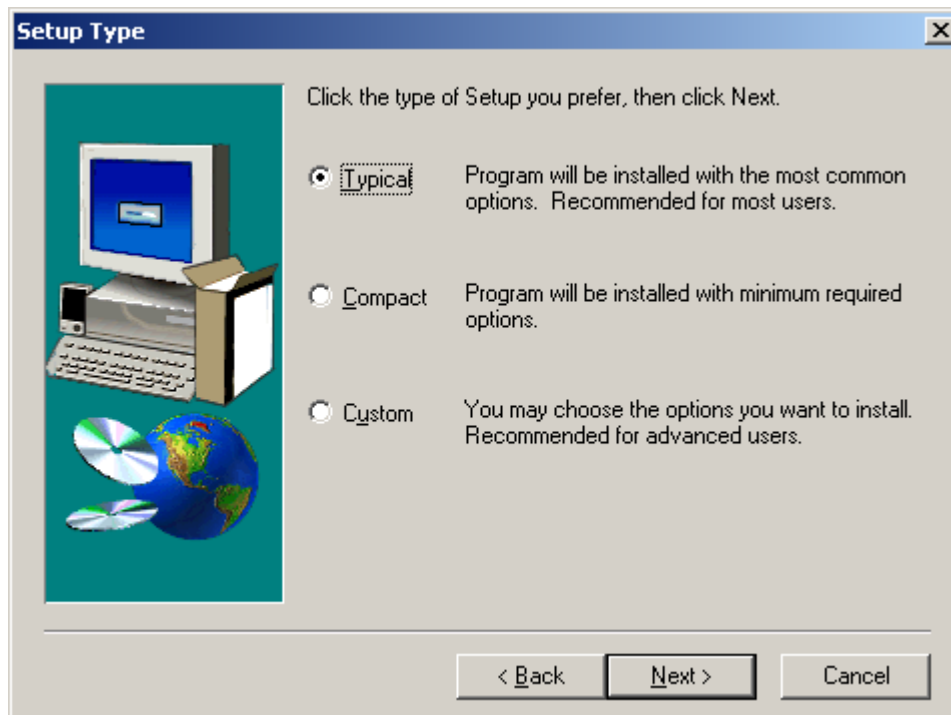
If the path is **NOT** correct, click on the "**Browse**" button and either navigate to the correct path or enter the correct path in the "**Path:**" box.



When the path in the "**Path:**" box is correct, click the "**OK**"* button and then click the "**Next**" button.

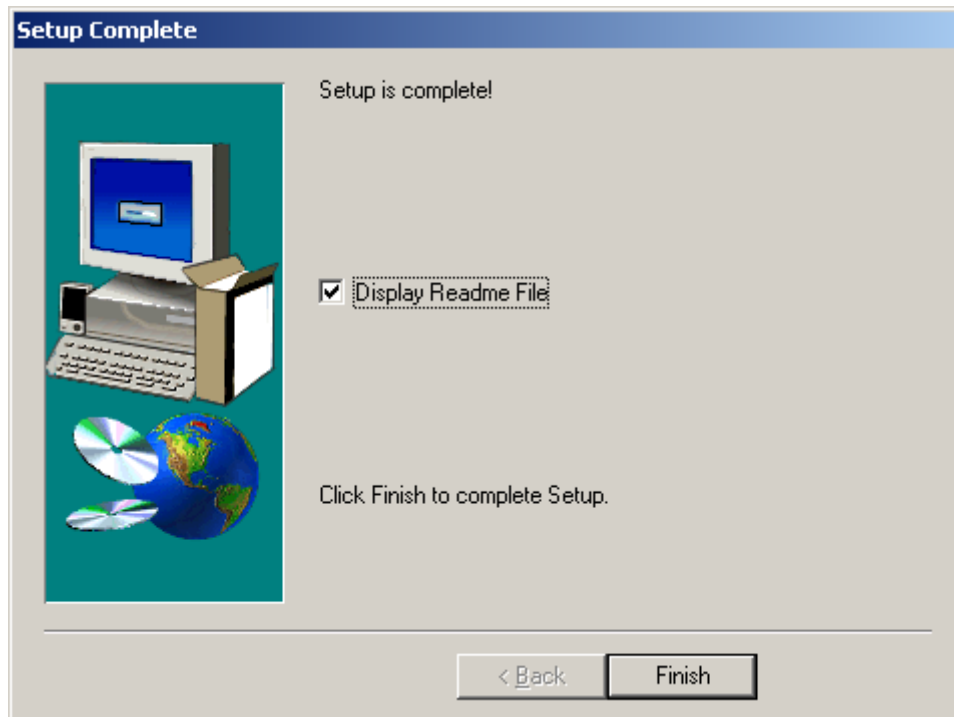
*If any part of the path does not exist, you will be prompted to create the non-existent elements in the path. Click "**Yes**".

Step 5 -- Installation of WPS for WordPerfect 9



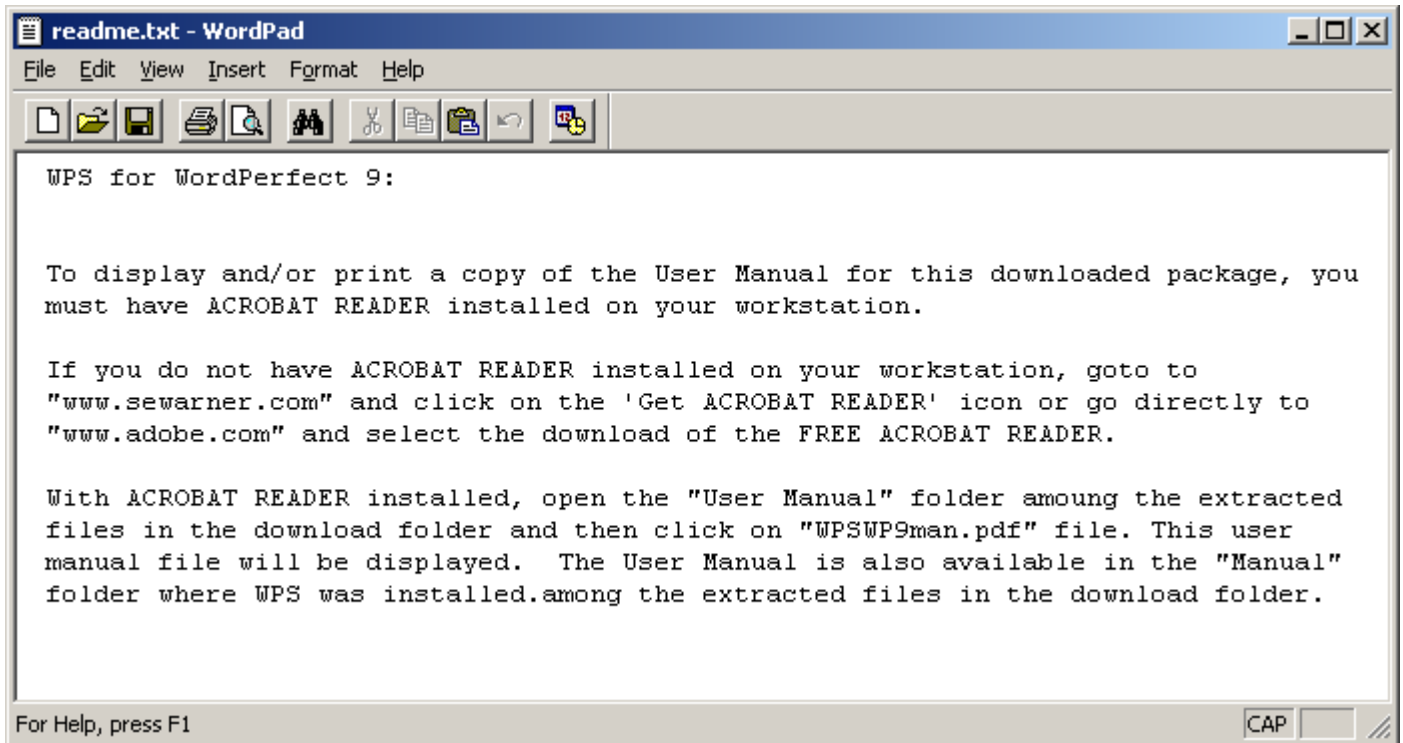
Select "**Typical**" and click "**Next**" button.

Step 6 -- Installation of WPS for WordPerfect 9



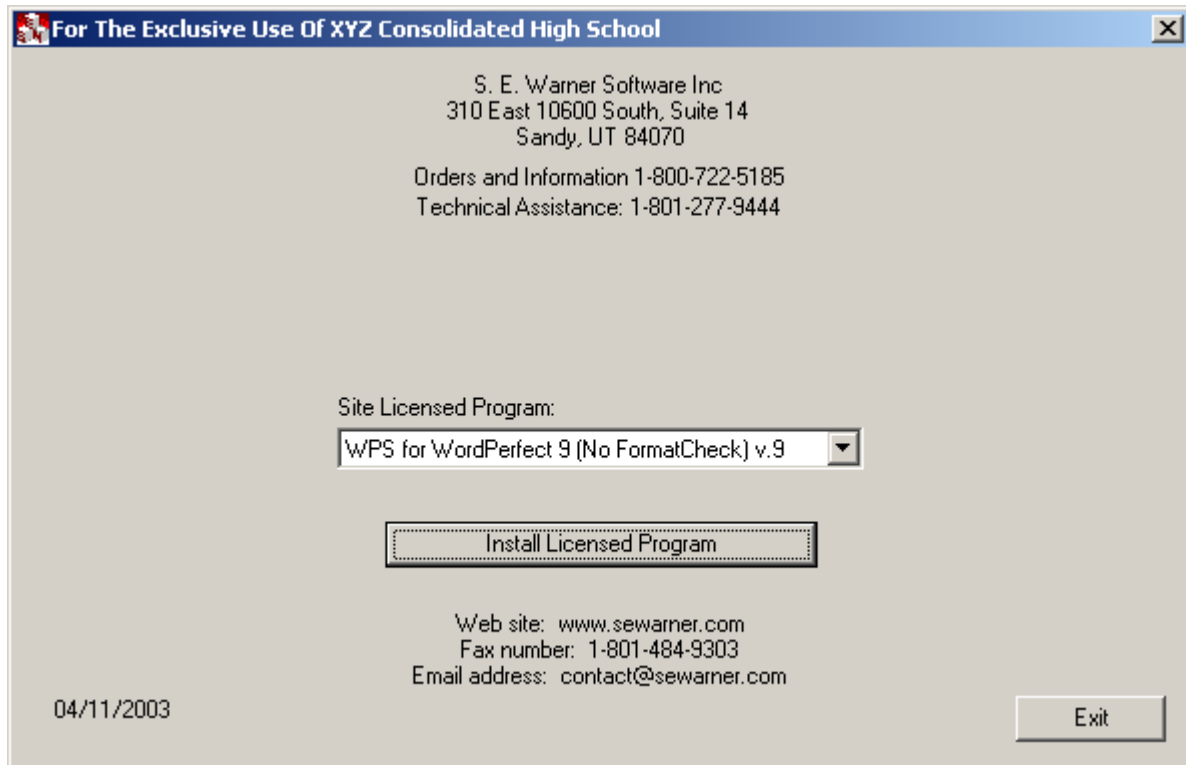
Recommend that you check the "**Display Readme File**" box, and then Click on the "**Finish**" button.

Step 7 -- Installation of WPS for WordPerfect 9



Click on the "**Close box**" to close the Readme document

Step 8 -- Installation of WPS for WordPerfect 9



Click on the "Cancel" button to close the "Install Program".